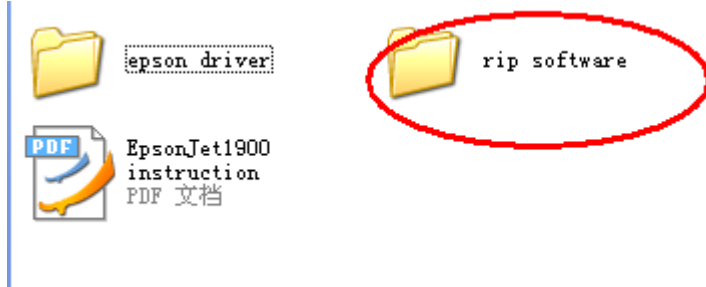


How to install & use Rip software

Chapter 1. how to install it into computer.

1. Install software from CD.



2. Copy folder of Rip software from folder into your computer. Or install it from Spare folder

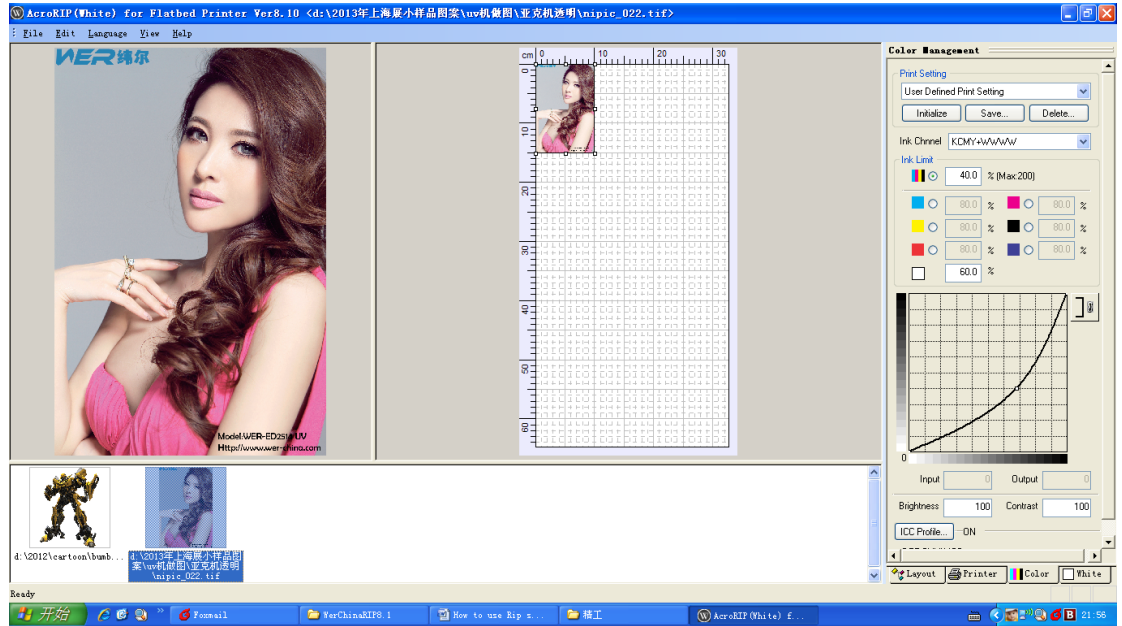


3. Run the shortcut from software folder & send one shortcut onto screen of



Chapter 2 . How to use and send job from Rip software to print.

1. Run software from the desk shortcut icon.



2. Information of Layout button page.

Layout

Size of printing area

Paper Size	
Width	32.813
Height	64.828

Original Size	
Width	19.945
Height	29.926

Output Position	
X	0.000
Y	0.000

Output Size	
Width	9.997
Height	15.000

Size of image that you want print out

Scale	
Equal Proportion	True

Copies	
Copies (White)	0
Copies (Color)	1

Repeat	
X	1
Y	1
Distribute	Spacing
X Spacing	0.000
Y Spacing	0.000

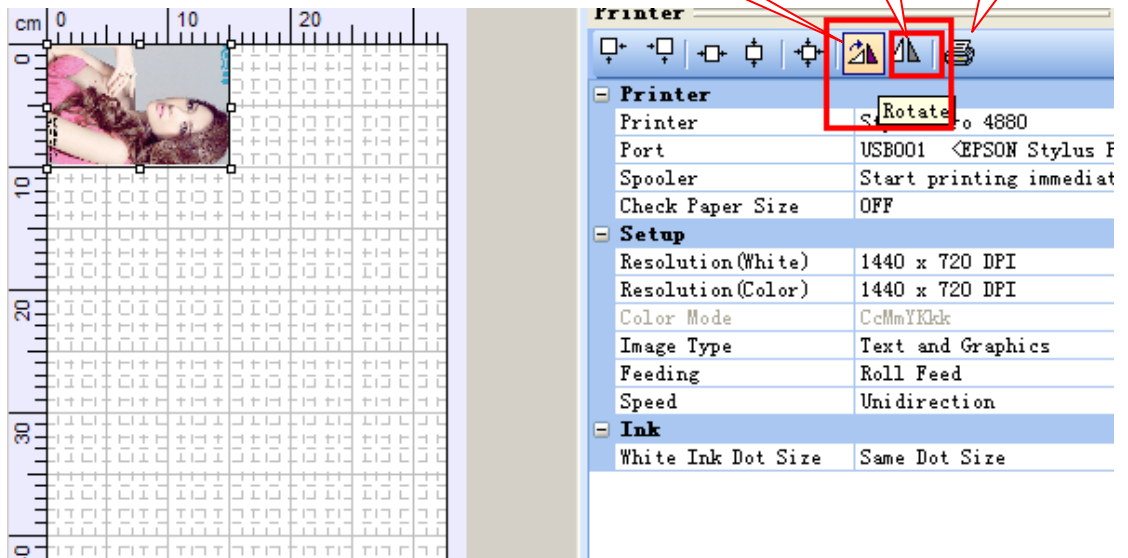
Function button

Layout Printer Color White

Rotate image

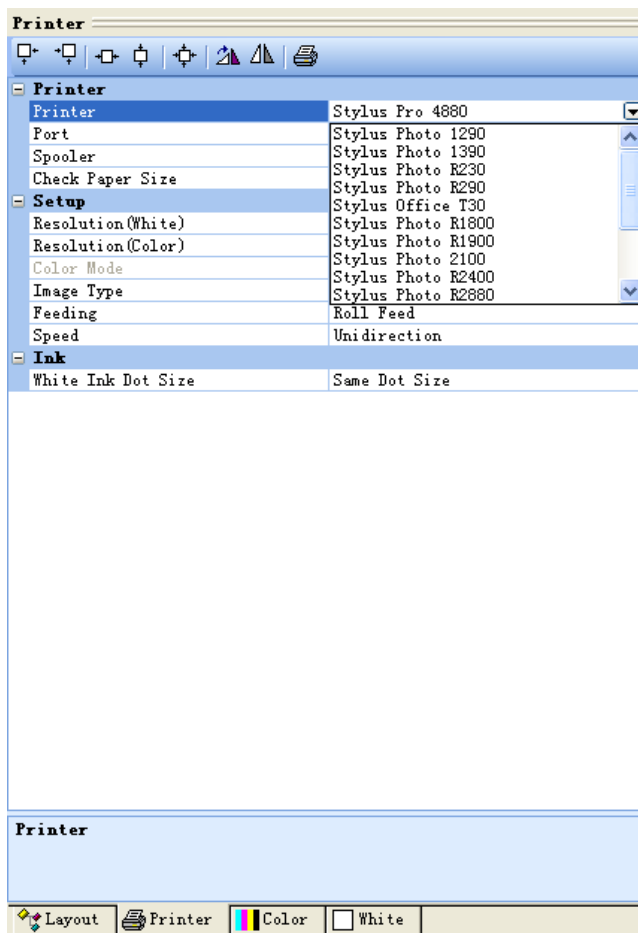
Mirror button

Printing button

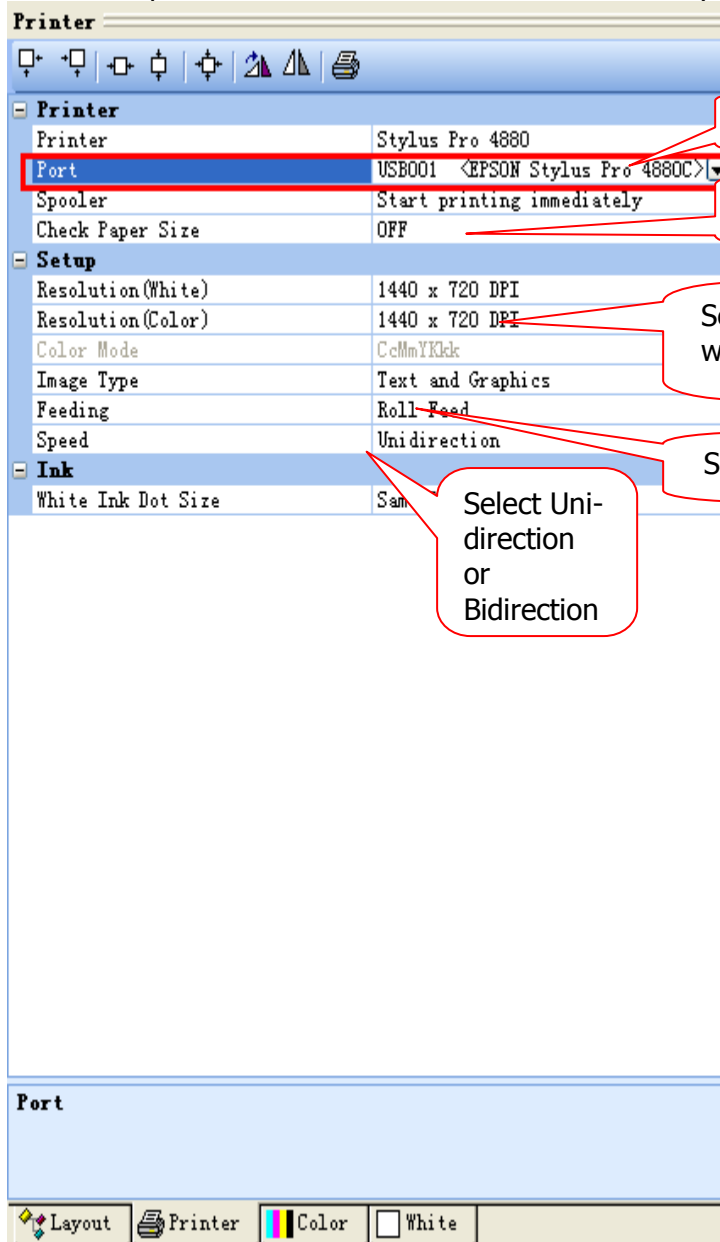


3.

4. Select model of your printer according to Epson model in Printer button page.



5. Select the port from the list which is same model of your printer.



Port of your printer

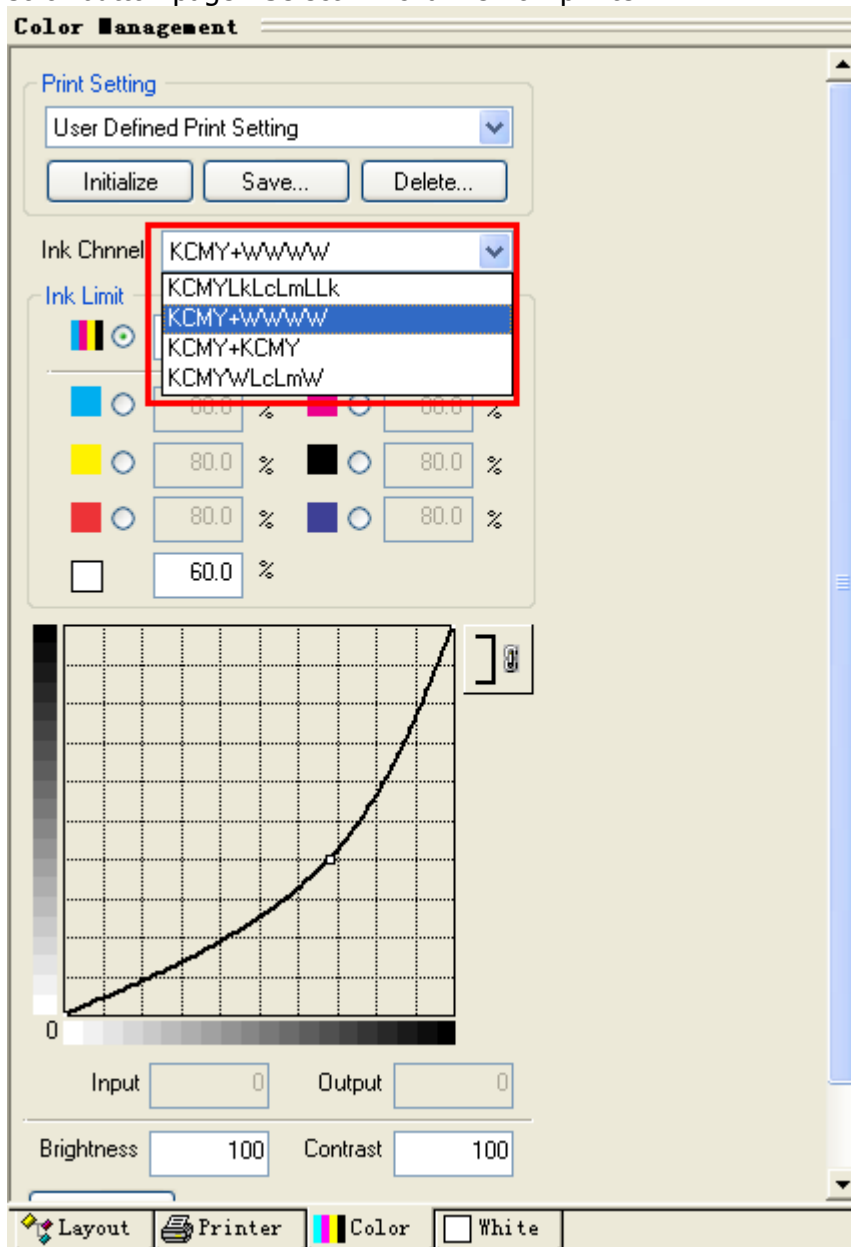
Set up option same this

Select resolution what your want to print out

Set up option same to this <Roll Feed>

Select Uni-direction or Bidirection

6. Color button page. Select ink channel for printer.



7. Control ink level

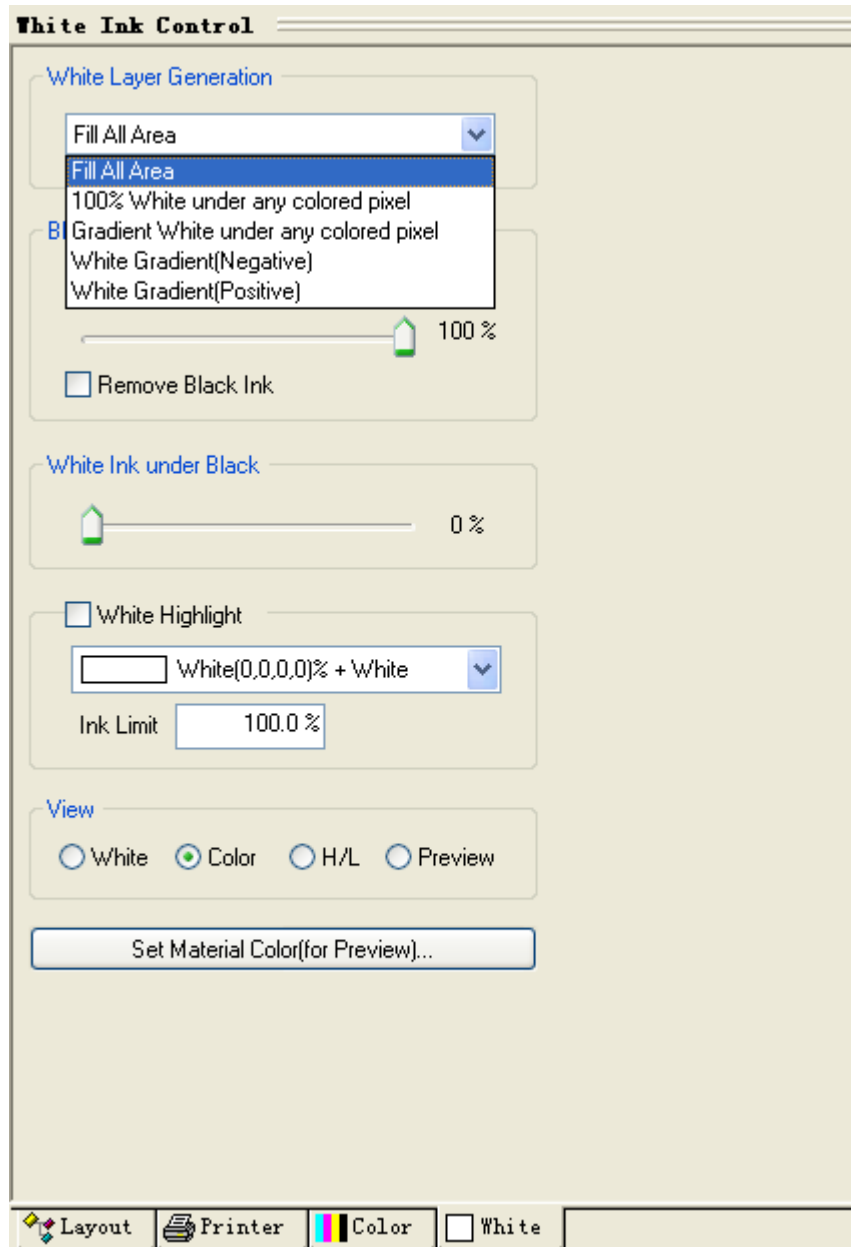
The screenshot shows the 'Color Management' dialog box with the following settings:

- Print Setting:** User Defined Print Setting (dropdown), Initialize, Save..., Delete... buttons.
- Ink Channel:** KCMY+WWWW (dropdown).
- Ink Limit:**
 - Total ink limit: 40.0 % (Max:200)
 - Individual color limits: Cyan (80.0%), Magenta (80.0%), Yellow (80.0%), Black (80.0%), Red (80.0%), Blue (80.0%), and White (60.0%).
- Graph:** A grid showing a curve from 0 to 100 on the x-axis and 0 to 100 on the y-axis.
- Input:** 0, **Output:** 0
- Brightness:** 100, **Contrast:** 100
- ICC Profile:** DEF-CMYK.ICC (with an 'ON' indicator and an 'ICC Profile...' button).
- Bottom Bar:** Layout, Printer, Color, White buttons.

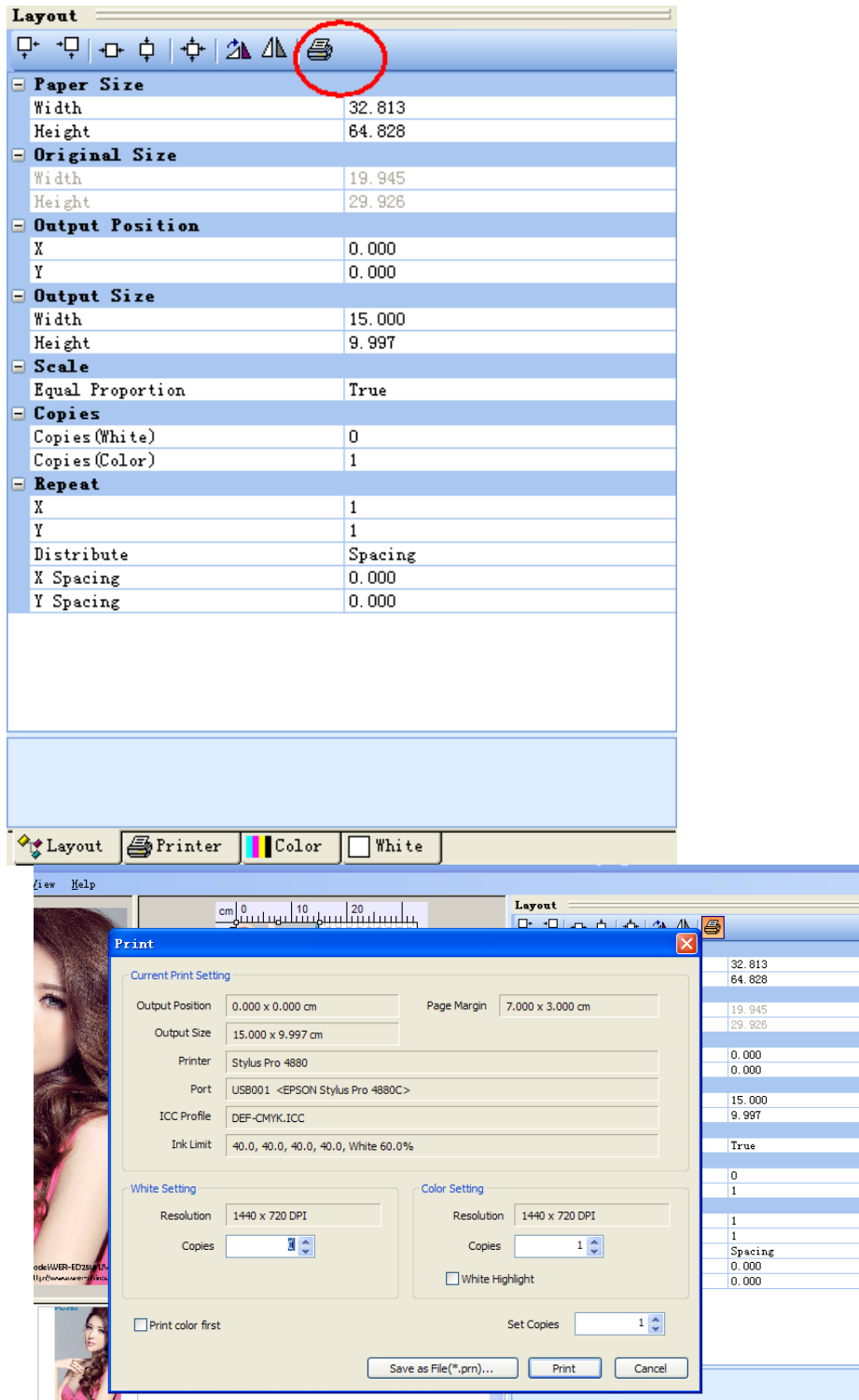
Two red callout boxes provide additional instructions:

- The first callout points to the '40.0 % (Max:200)' field and contains the text: "Set up total ink level here. value from 10 to 200 . or you can set up single color also after check in it. And white color ink also."
- The second callout points to the 'ICC Profile...' button and contains the text: "Select different ICC for your material and different ink"

8. White ink page. Select the option that you want how the white ink print on your image .



9 .Send job to print after you set up all steps.Please go back the Layout or Printer button page, press the printer ICON button or just press F10 , Then the new window will come out , you will see all parameter of job that you set up.



There are two options about white setting and Color setting. If you want print white color first and automatically going to print other 4 colors, then just need change all 0 into 1, it means printer will going to print white color first. then after white color finish to print, printer will automatically going to print colorful image, but the system doesnot go back same location where it beginning to print out white ink ,

so you have to reset the table to beginning position that you did it for white ink . then it will print colorful image overlap on white image , to make one completely image that you want.

If you think it is hard to do , please just print white color first. So COLOR SETTING should be 0 value. After it finish printing white color , it will stop until you operate it do next step by yourself. So it is mean white color and other 4 colors are printed out step by step. It is easy for operator who just beginning to use this type printer.

Thanks for you choose this printer from WER-CHINA digital printer company.

Please feel free to contact technical department if you have any question about any model printer from us.

SKYPE: wer_technician Roy Fong

 Wer_service Bruce Liu

www.wer-china.com

Prepared by : technical department of WER-CHINA digital printer corporation.